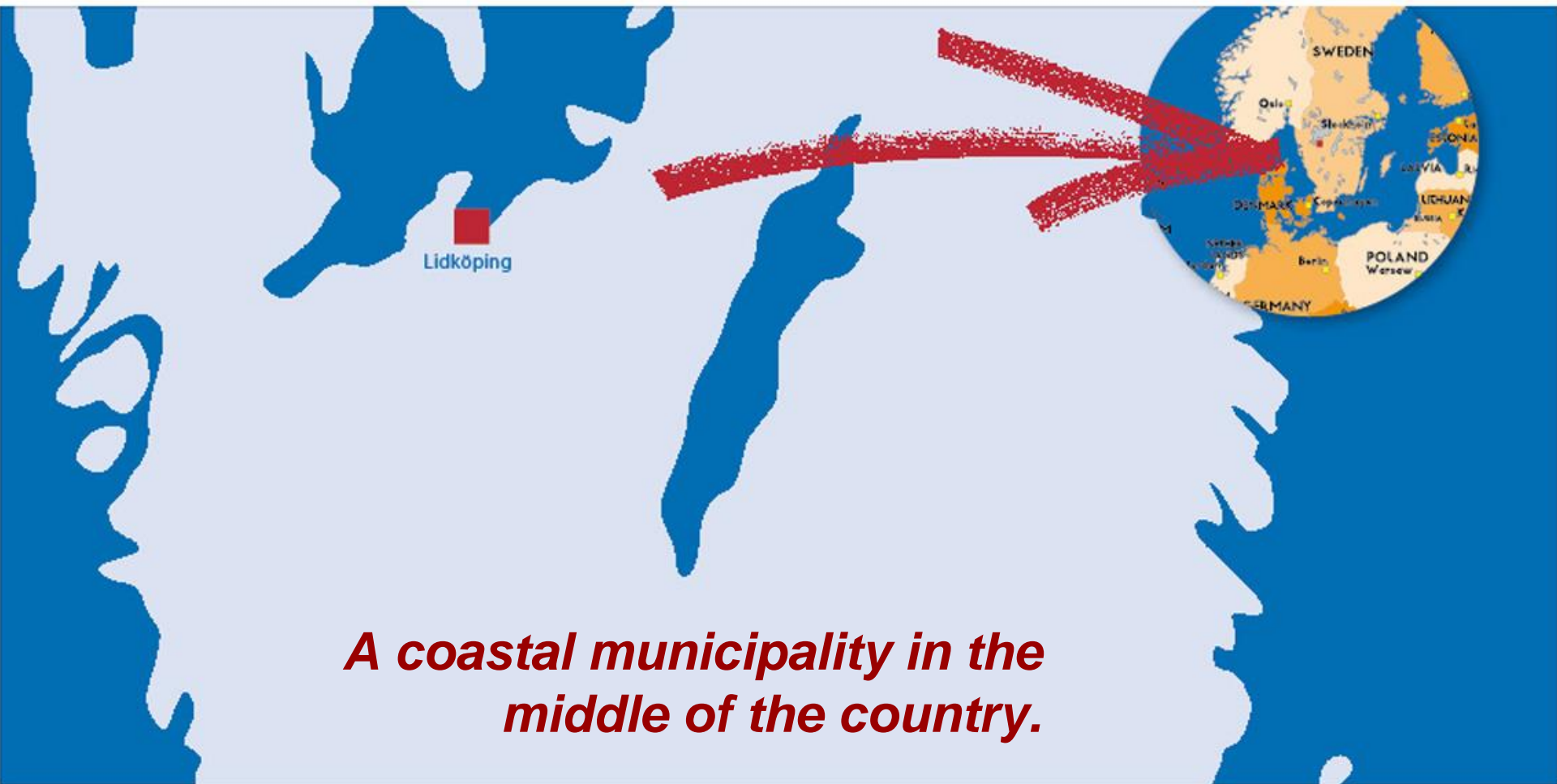


Welcome to

LIDKÖPING VID VÄNERN



*A coastal municipality in the
middle of the country.*

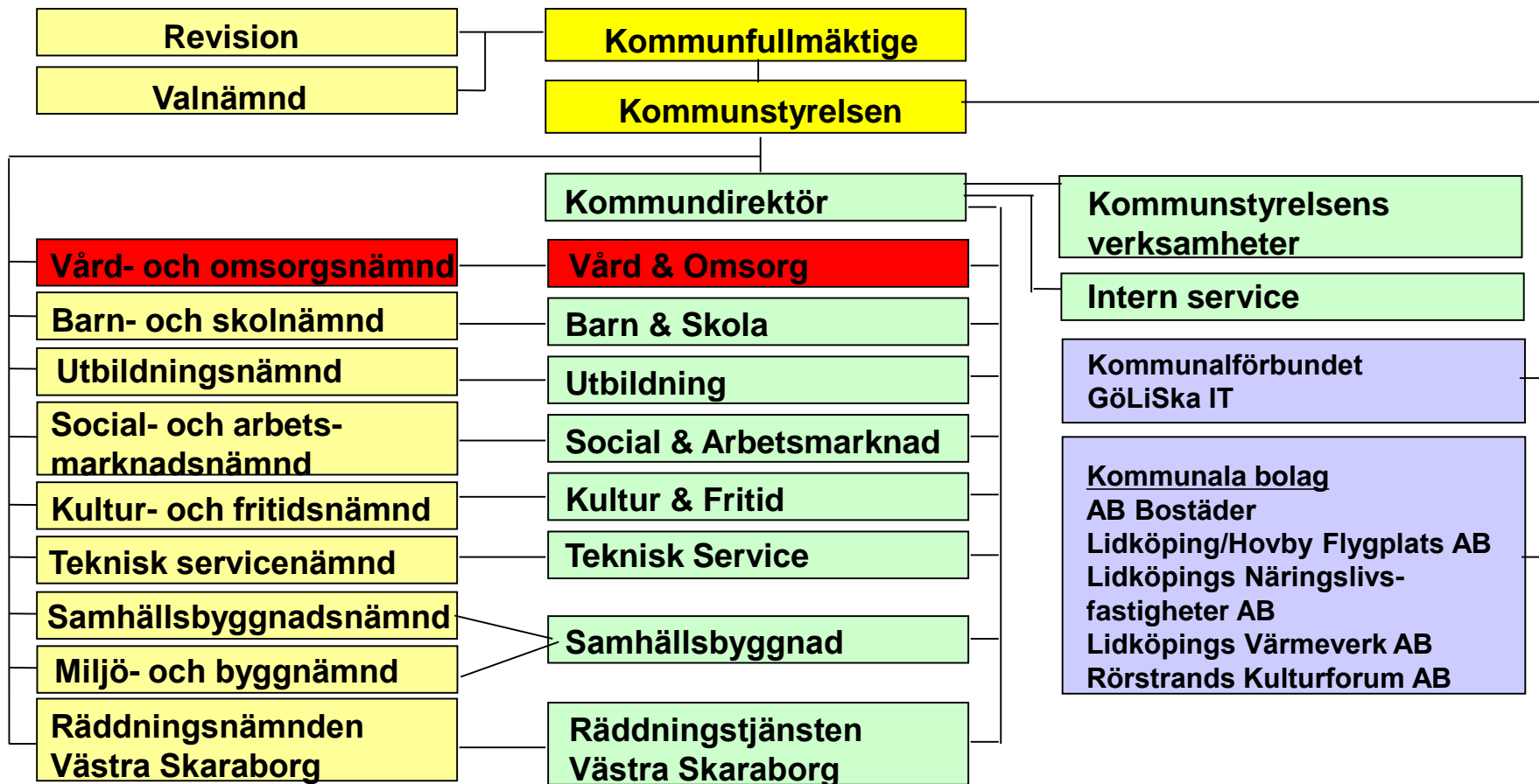


***Our vision:
Lidköping – a hospitable and
sustainable municipality***

Objectives 2030

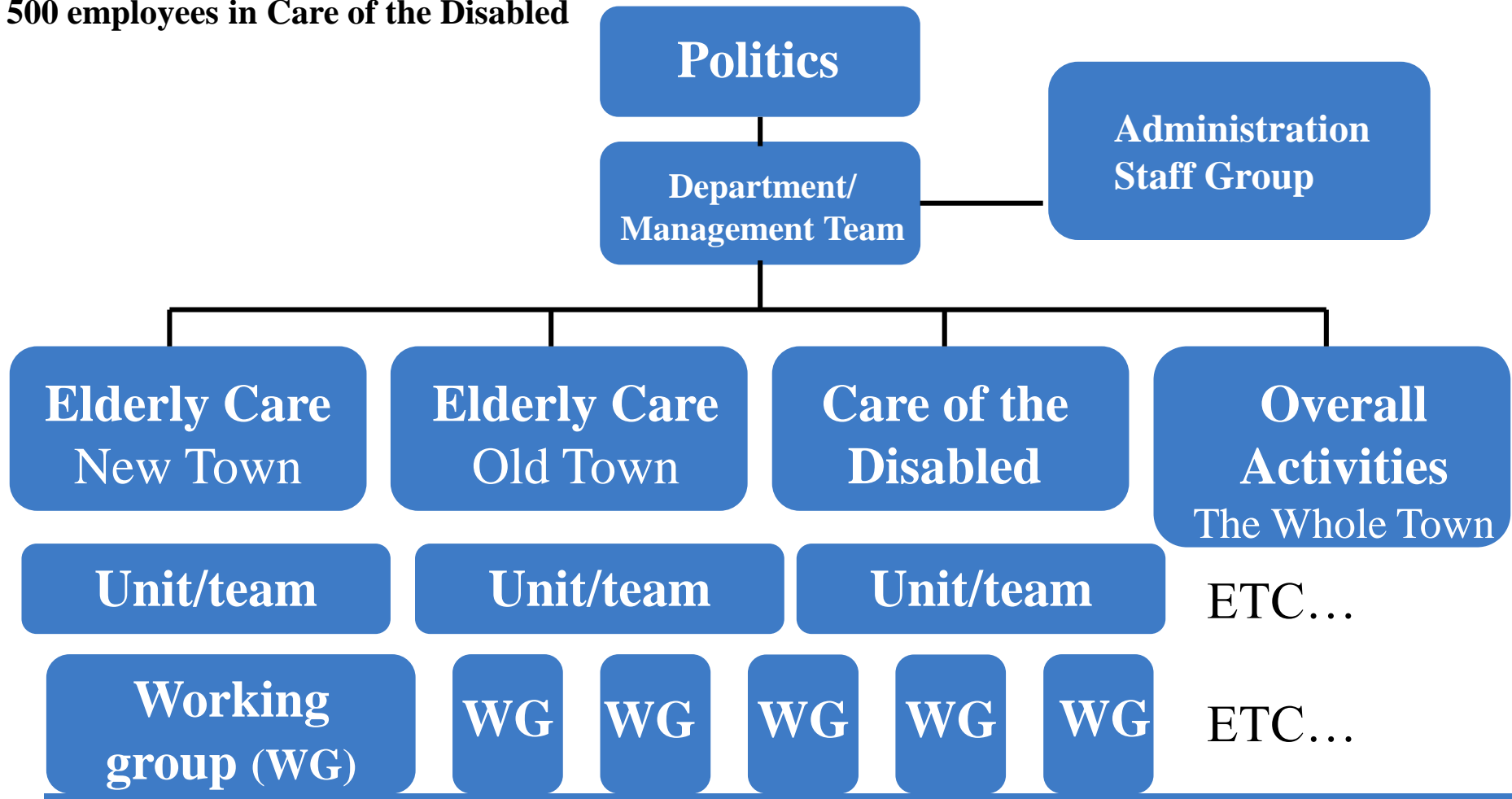
- Recognised good quality of life, a healthy environment and good services for everyone mean that more people are moving to Lidköping and we now have a population of at least 45,000.
- Lidköping is a meeting place that has doubled its number of visitors.
- There should be jobs within reach for everyone who wants to live in Lidköping and good infrastructure for getting to and from education and work.





COMMUNITY CARE SERVICES DEPARTMENT

1000 employees in Elderly Care
500 employees in Care of the Disabled



ENSURING QUALITY OF LIFE



The aim of municipal care provision is to ensure that older people and those with disabilities are able to live normal, independent lives. This includes living in their own homes for as long as possible.

Extract the social services law:

Old people

4 § Social Services Committee shall work to ensure that older people are able to live independently in safe conditions and have an active and meaningful existence in community with others.

5 § Social Services Committee shall work to ensure that older people have good housing and to provide those who need the support and help at home and other easily accessible service. The municipality shall set up activities for the service and care for older people who need special support.

6 § Social Services Committee will make themselves familiar with living conditions in the municipality of older people as well as in its outreach activities to inform the social service activities in this area.

Home help services

- Support in your home
- Cleaning
- Laundry
- Personal hygien
- Personal care
- Health care and medical service
- Social activities
- Rehabilitation



Population in Lidköping

Population in Lidköping compared with Sweden in year 2016

	<i>Lidköping</i>	<i>Sweden</i>	
<i>Totally</i>	39 235	9 995 153	
Percentage over 65 years	22,5 %	19,8 %	
Percentage over 80 years	5,8 %	5,1 %	
<i>Prediction year 2026</i>			
Percentage over 65 years	24,9 %		
Percentage over 80 years	8,5%		

Elderly with home-care

Percentage elderly with home-care services		
	Lidköping	Sweden
Percentage elderly over 65 years	7 %	9 %
Percentage elderly in special housing	5 %	4 %

Special housing

- Support around the clock
- Security
- Dementia
- Needs assessed

Preventive care

- SeniorCenter/
meeting places
- "Fixers"
- Outdoor services
- Prevent injury
cases
- Increasing
accessibility



Late life learning

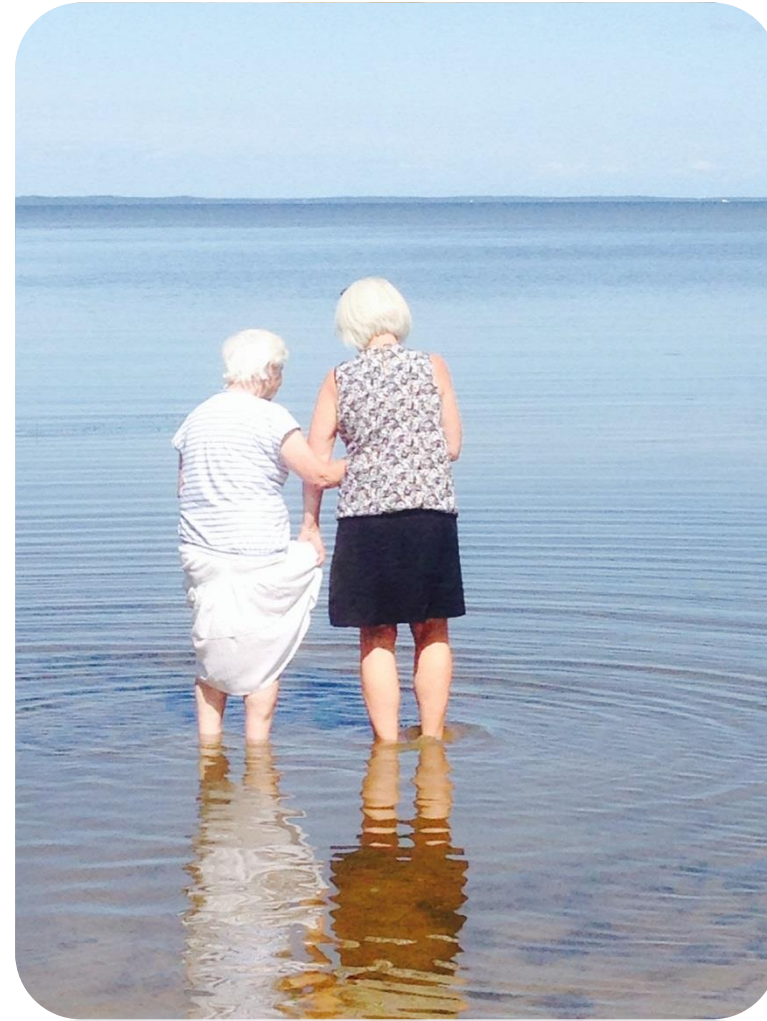
Fundamental values in elderly care

Living in dignity and with a sense of well-being could mean, that:

- You are able, to the extent possible, to choose how and when you receive support.
- You are involved in the decision-making processes surrounding your care. If you wish, your immediate family can also be involved.
- You feel that the quality of care you receive is high.
- The personnel treat you kindly and with respect.
- You feel that the personnel respect your opinions and wishes. You are also able to communicate freely, either through speech or another mode of communication.

Late life learning

- Your privacy, integrity and life choices are respected.
- You feel safe. You decide what feeling safe means to you. It may, for example, mean that you feel secure in your own home or at ease with the type of care offered by the personnel.
- You feel that your life has meaning. This could arise from, for example, being able to live in accordance with your culture, philosophy and/or faith.



Late life learning

- Sense of coherence
- Meaningfulness
- Comprehensibility
- Manageability

Late life learning



- Moving resources from residential care to preventive efforts
- Making information more accessible
- SeniorCenter
- Meeting places
- A wide range of activities for elderly.

Wishing you a pleasant stay in Lidköping!

